



Thin client Laptop **STD**

The STD Thin client Laptop is a next-generation 15,6" laptop with integrated and pre-installed IGEL OS11 Operating System, designed for remote, safe and efficient connection to a Virtual Desktopp Infraestructure.

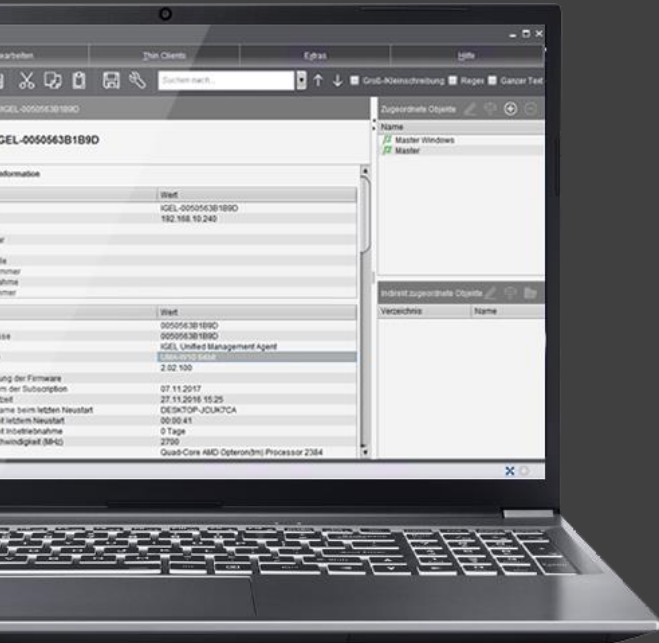
- Intel Gemini Lake Platform
- Display 15.6" FHD
- IGEL OS11 Ready
- IGEL UMS Centralized Management



Thin client Laptop. *Ready-to-Work.*

Access your virtual desktop safely, wherever you are.

The STD Thin client Laptop is a next-generation platform, designed to connect securely to virtual desktops in Microsoft, VMware, Citrix and AWS infrastructures. The most advanced software IGEL OS11 is fully integrated and pre-installed on this optimized Thin client Laptop. Simply connect the laptop to your wireless network, access your virtual desktop session with your username and password, and start working safely. Anywhere and anytime



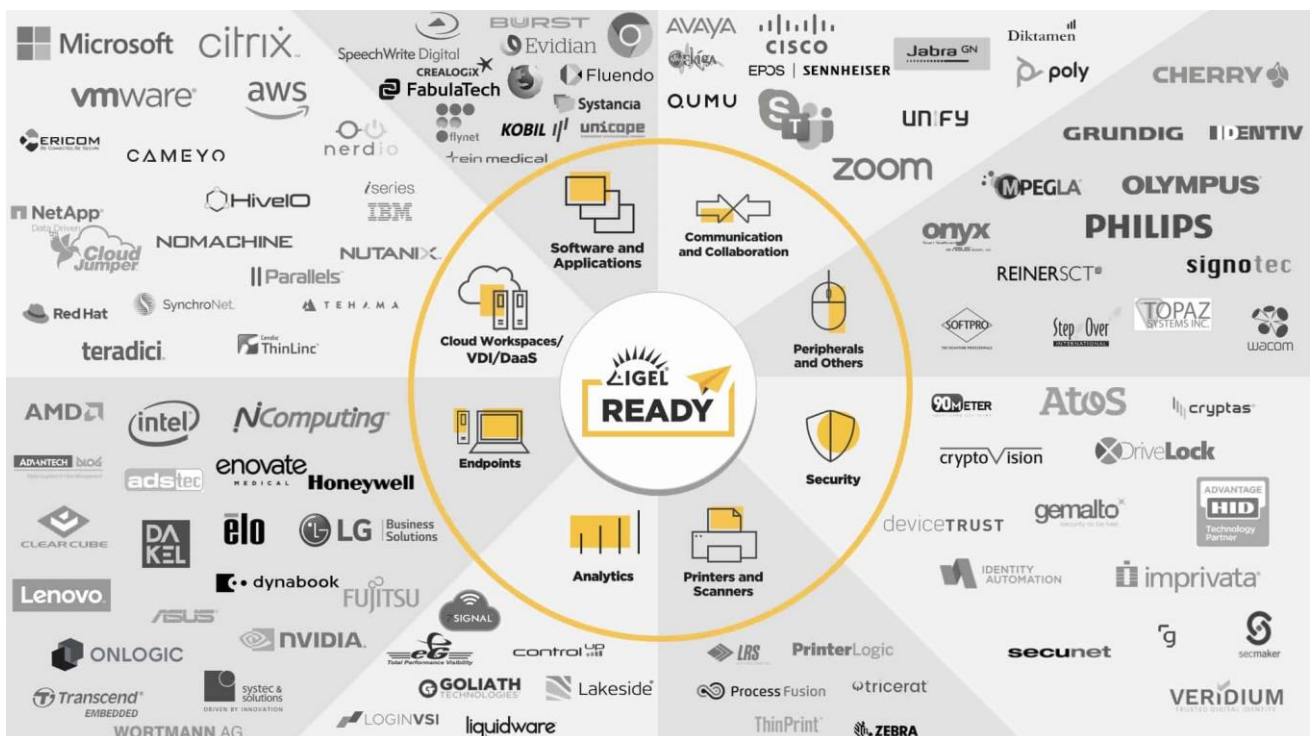
Thin client Laptop & Workspace Edition = maximum efficiency

IGEL OS.

A secure Linux based Operating System that incorporates more than 90 technologies to integrate into any environment and with any peripheral, with a simple and efficient user interface.

IGEL UMS.

The Universal Management Suite (UMS) is the management console that enables remote and centralized control of thousands of workstations, including workstations that are outside the local network.



Specs Thin client Laptop **STD**

Operating System	IGEL OS11 (a valid Workspace Edition license is required)
VDI compatibility	Microsoft WVD, VMware Ready, Citrix Ready, AWS
Management	IGEL Universal Desktop Management (UMS) Optional Enterprise Management Pack (ICG)
Processor	Intel Pentium Silver N5000 (14nm, 1.1GHz, TDP 6W)
Display	15.6" FHD (1920x1080) 16:9 panel, 3.2mm
RAM	8GB DDR4 2666MHz
Video controller	Intel UHD Graphics 605 (Intel Dynamic Video Memory Technology)
Storage	1x eMMC 64GB
Audio	High Definition
Keyboard	Full Size TouchPad multi-movement with scroll function
I/O	2x USB 2.0 (type A) 1x USB 3.2 Gen 1 (type A) 1x USB 3.2 Gen 1 (type C) 1x HDMI output (HDCP) 1x Audio Jack 2 en 1 (headphones / microphone) 1x Jack DC-in
Card Reader	Micro SD card reader
Slot	2x M2 (1x WLAN Combo M.2 2230; 1x M.2 2280 SSD-SATA card)
Communications	Intel Dual Band Wi-Fi 6 AX200 2x2 AX+BT PCIe M.2 2230 1.0M HD video camera
Power Supply	AC 100-240V, 50-60HZ, DC output 19V 2.1 ^A , 40W Smart Lithium-Ion 6WH Battery; autonomía 600 min
Security	Kensington Lock Slot Intel PTT
Dimensions	360.4 (w) x 239.3 (D) x 18.5 (H) mm
Weight	1.59kg, including battery 36WH
Warranty	5 years (Service Pack required)
Service Level	Dedicated Technical Support 5x8 Advanced Replacement NBD (subject to location)



IGEL Ready | Thin client Laptop STD integrates the IGEL OS operating system; it is only needed the license activation on the customer IGEL License Portal (ILP) and the user profile configuration. Optionally it can include the IGEL Cloud Gateway (ICG) functionality to configure an automatic and secure VPN connection.



Dakel Informática, SA

Ronda Can Fatjó, 8
Parque Tecnológico del Vallés
08290 Cerdanyola del Vallés
Barcelona | SPAIN

Contact

T. +34 935 045 300
F. +34 935 045 301
www.dakel.com
dakelinfo@dakel.com