



# Crafting The Modern Workspace

John Moody – Director Presales Engineering  
Jack Hicks – Senior Sales Engineer

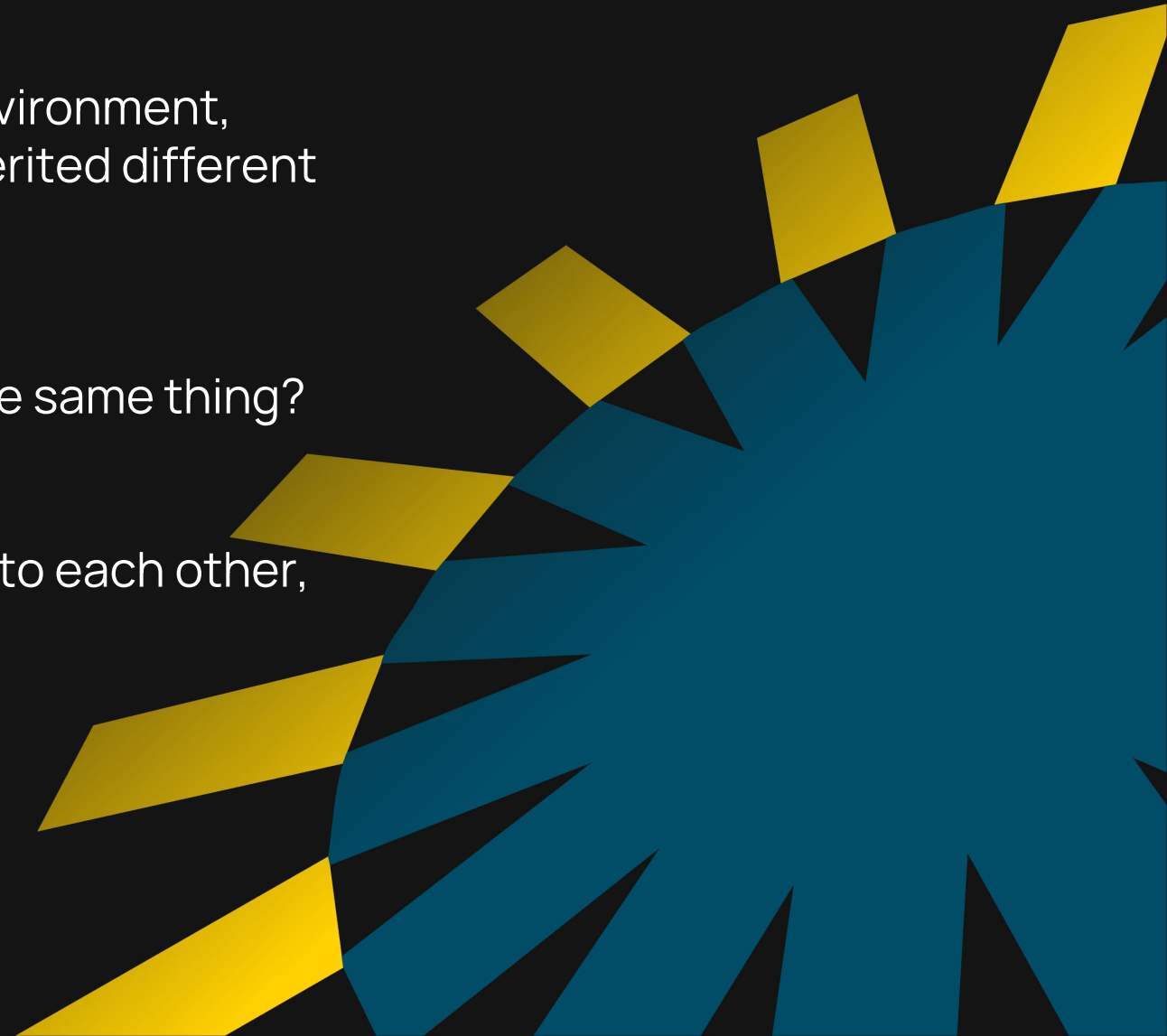


# Why Craft The Modern Workspace?


An abstract graphic on the right side of the slide. It features several overlapping, irregular geometric shapes in shades of yellow and a dark teal or blue. The shapes are layered, with some appearing to be in front of others, creating a sense of depth and movement. The overall style is modern and minimalist.

# Show of Hands


- Who here in the audience is working with an environment, (Apps, infrastructure, etc) where you have inherited different solutions, put in place by different people?
- Which of you have multiple solutions that do the same thing?
- How many of you have solutions that don't talk to each other, but you wish they would?



# Optimise The Journey

- Not just the journey of implementing a solution for the IT team.
  - That team must then complete a journey of continued management and upkeep for that solution to keep everything running.
  - Optimise the journey that your end users take every day to fulfil their role.
- 

# Build Something More Focused

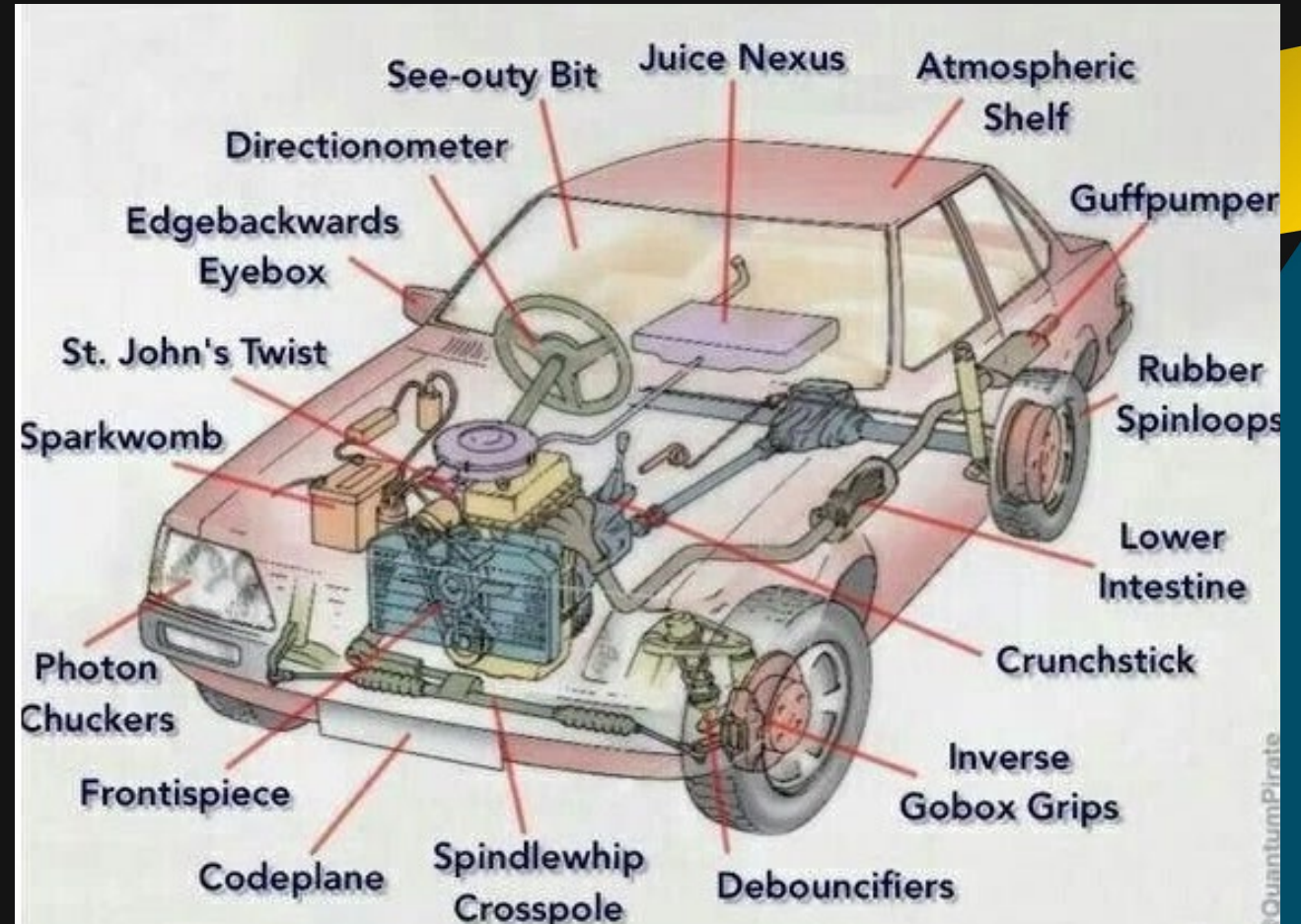
- You don't walk into a car showroom and find that every car is identical.
  - You pick one based off what you need.
  - A well-crafted modern workspace is equivalent to buying exact spec of car you need and want.
- 



VS



- Every solution in the ecosystem we will run through here is important, and with everything in place you get a truly Modern Workspace.



# NUTANIX

- Nutanix Are like the Chassis
- Like the frame that a car is built on, It is the backbone of everything you build.
- Allows you to build exactly what you need on top of it, not just one solution.

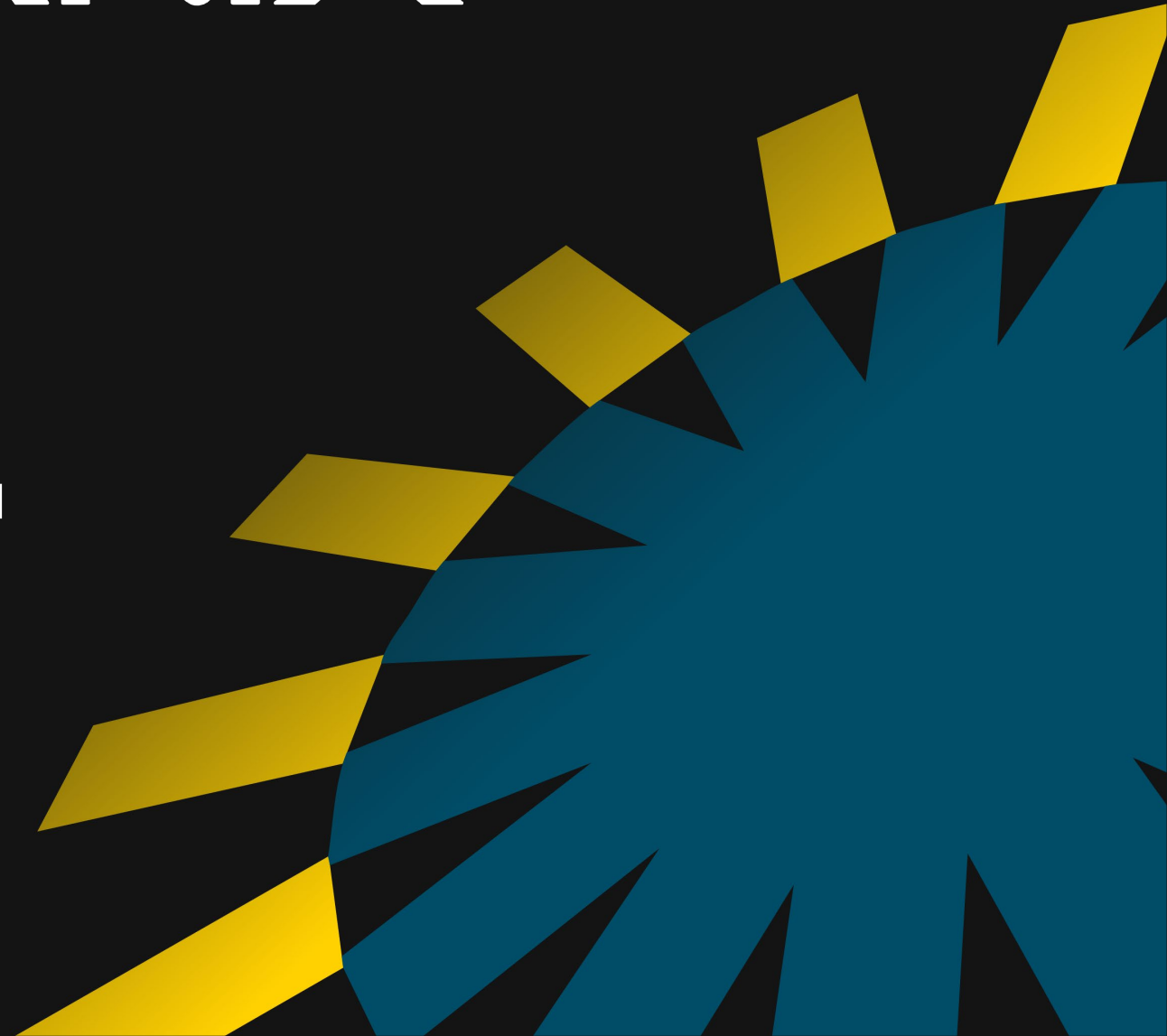




# NUTANIX

Danny Reppe

Senior Solutions Architect – Network and  
Security



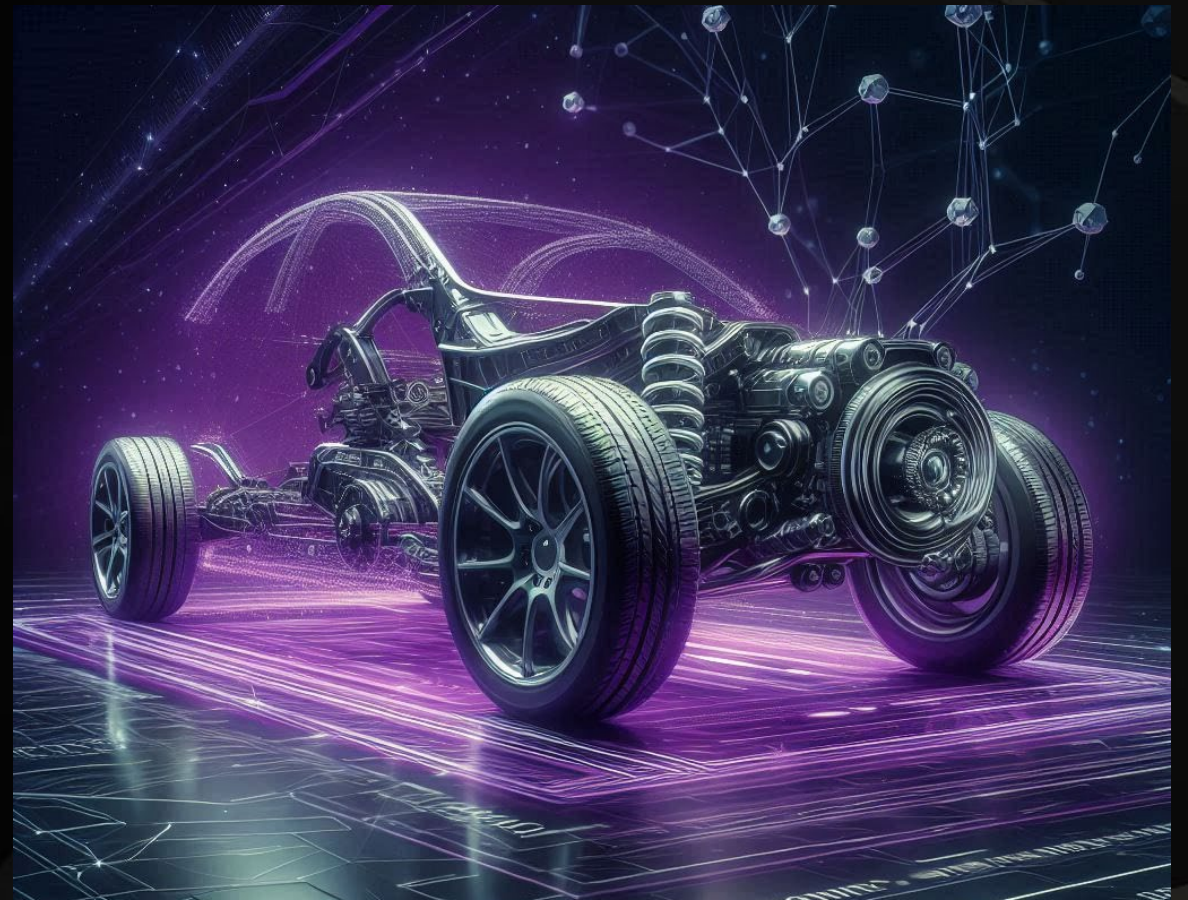
# NUTANIX

## Cloud Platform

The chassis is central to a car's design, affecting its performance, safety, and efficiency.

The Nutanix Cloud Platform plays a central role in your organization's IT, providing

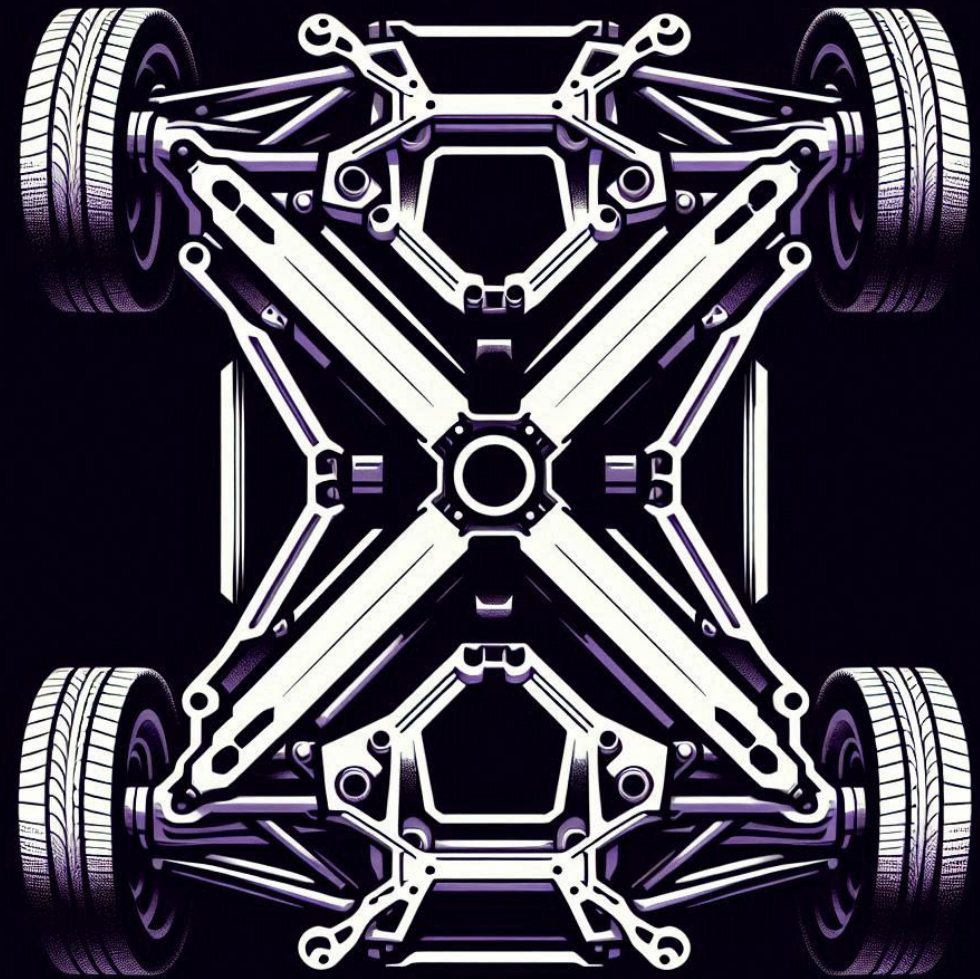
- Strength & Stability
- Flexibility
- Integration



# Strength & Stability

The Chassis provides essential resilience by distributing loads evenly, and absorbing shocks from rough terrain.

The Cloud platform must withstand shocks from cyber threats



**Nutanix Creates Cyber  
Resilience to Securely  
Run Anywhere.**

⋮  
**It's Simply  
What We Do.**

# Cyber Resilience Starts with One Platform

## Nutanix Cloud Platform

Unified Storage Services

Database Services

Desktop Services

### Cloud Infrastructure

Disaster Recovery

Container Services

Data + Network Security

Advanced HCI

Virtual Networking

Scale-Out Storage

AHV Hypervisor

### Cloud Manager

App Lifecycle Mgmt

Security Central

Cost Governance

Self Service Infrastructure

AI Operations

Hybrid Multicloud that Runs Anywhere

Private Cloud

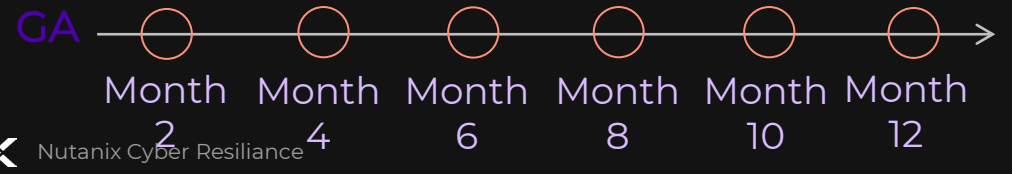
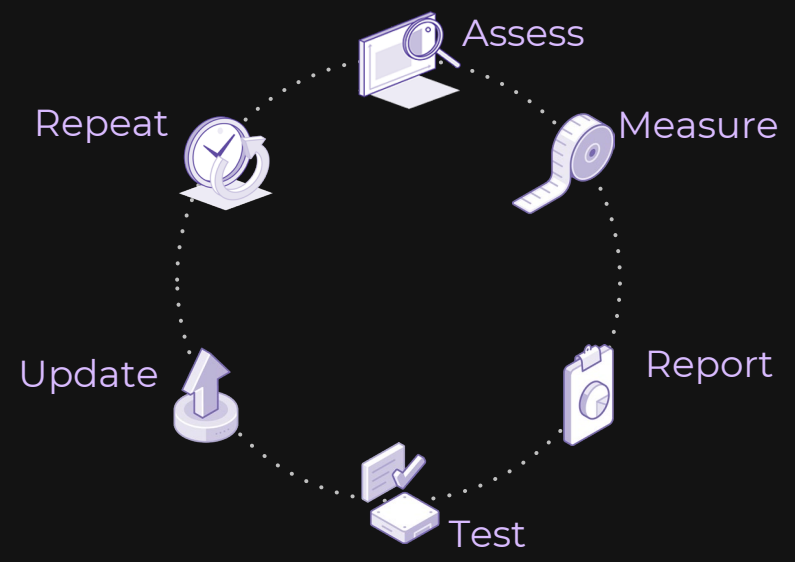


Public Cloud



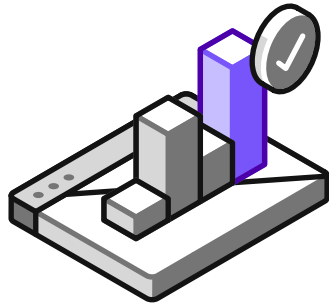
# We Build Security into the heart of the Nutanix platform.

## Security Lifecycle



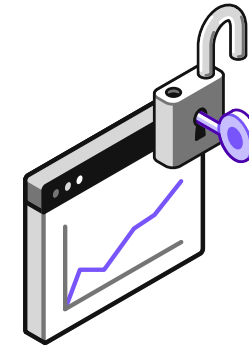
# How Nutanix: Secures Your Cloud Infrastructure

Choose either the Nutanix Vulnerability Database (NVD), or the Prism Security Dashboard to quickly patch platform vulnerabilities.



## Nutanix Vulnerability Database (NVD)

Online accessible database of vulnerabilities for multiple versions of Nutanix products.



## Prism Security Dashboard

Integrated security dashboard in Prism Central that can identify running platform vulnerabilities.



## Nutanix Lifecycle Management

# Ensure Application & Network Security in AHV

## Application Security: Flow

### Centralized Security Views

Security Central alerts you to vulnerabilities in your VMs and planning for Microsegmentation with visual network diagrams.

### Reduce Your Blast Radius

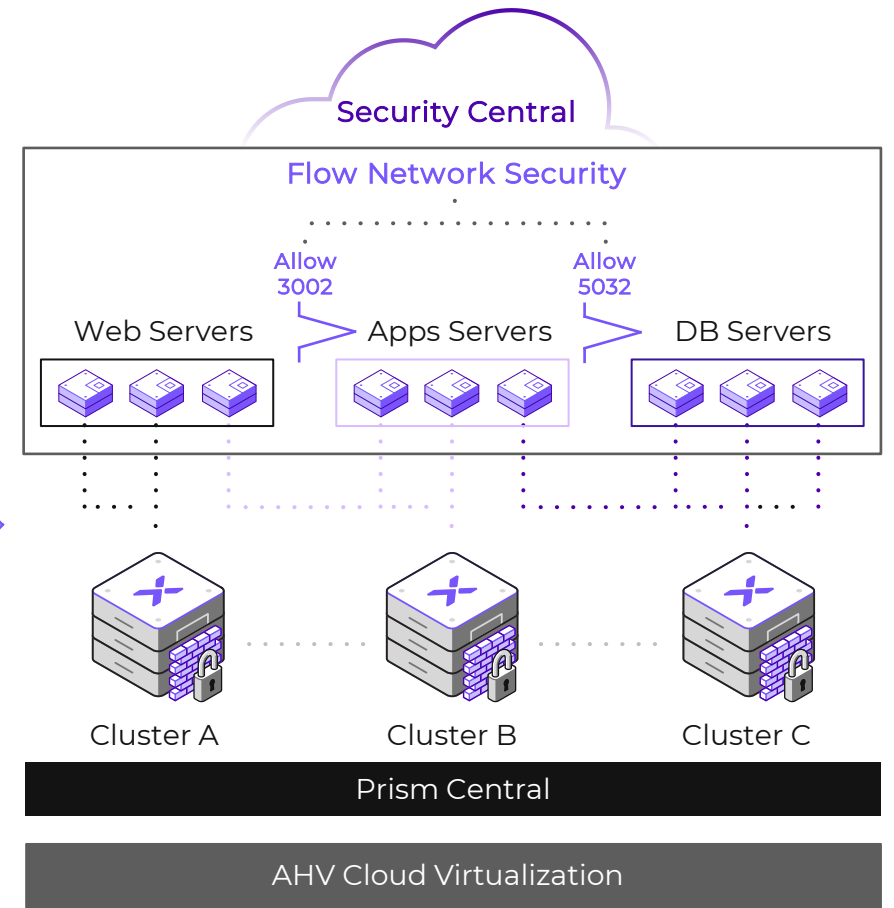
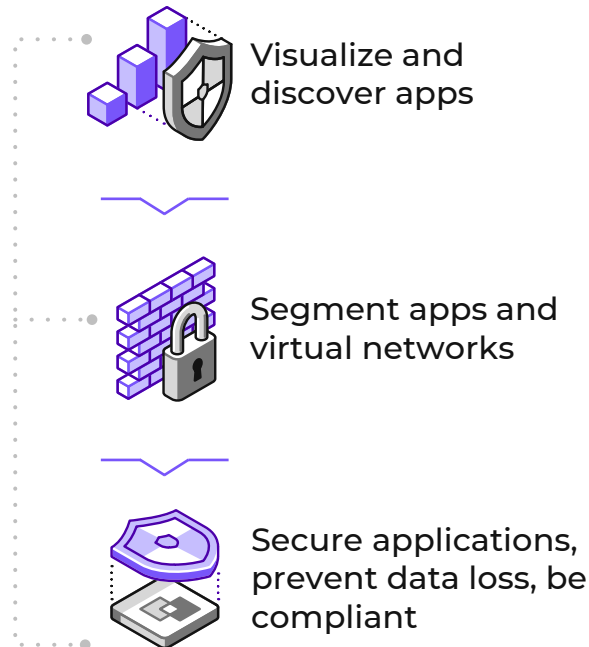
Flow Network Security simply creates policy-based Microsegmentation between your apps.

### Software Defined Networking (SDN) without the Headaches

Flow Virtual Networking enables cloud-like networking access controls with virtual private clouds (VPCs).

### Build the Foundations of Zero Trust

Enable Zero Trust segmentation and reduce risk through controlled access of apps and data.





# Flexibility

- A car chassis can be customized for different types of vehicles, sports cars, SUVs, trucks
- The Nutanix hybrid cloud platform can be tailored to meet specific business requirements, providing customized solutions for different workloads and industry needs.



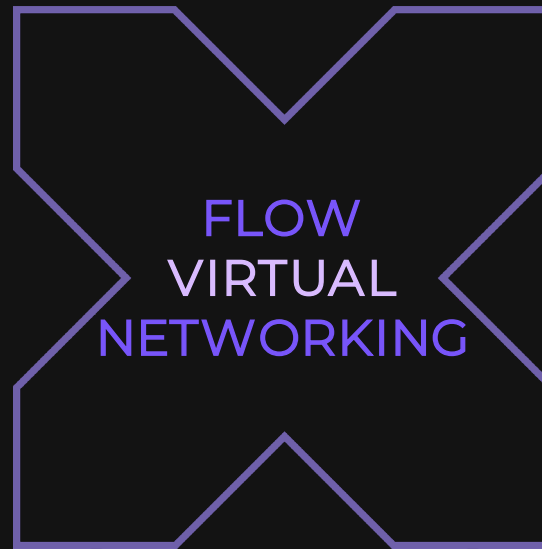
# Introducing Flow Virtual Networking

A solution for Modern Networking Needs

Scale Networking with  
your applications

Application Mobility  
wherever you Go!

Built-in Multi-Tenancy



Build once, Deploy  
anywhere

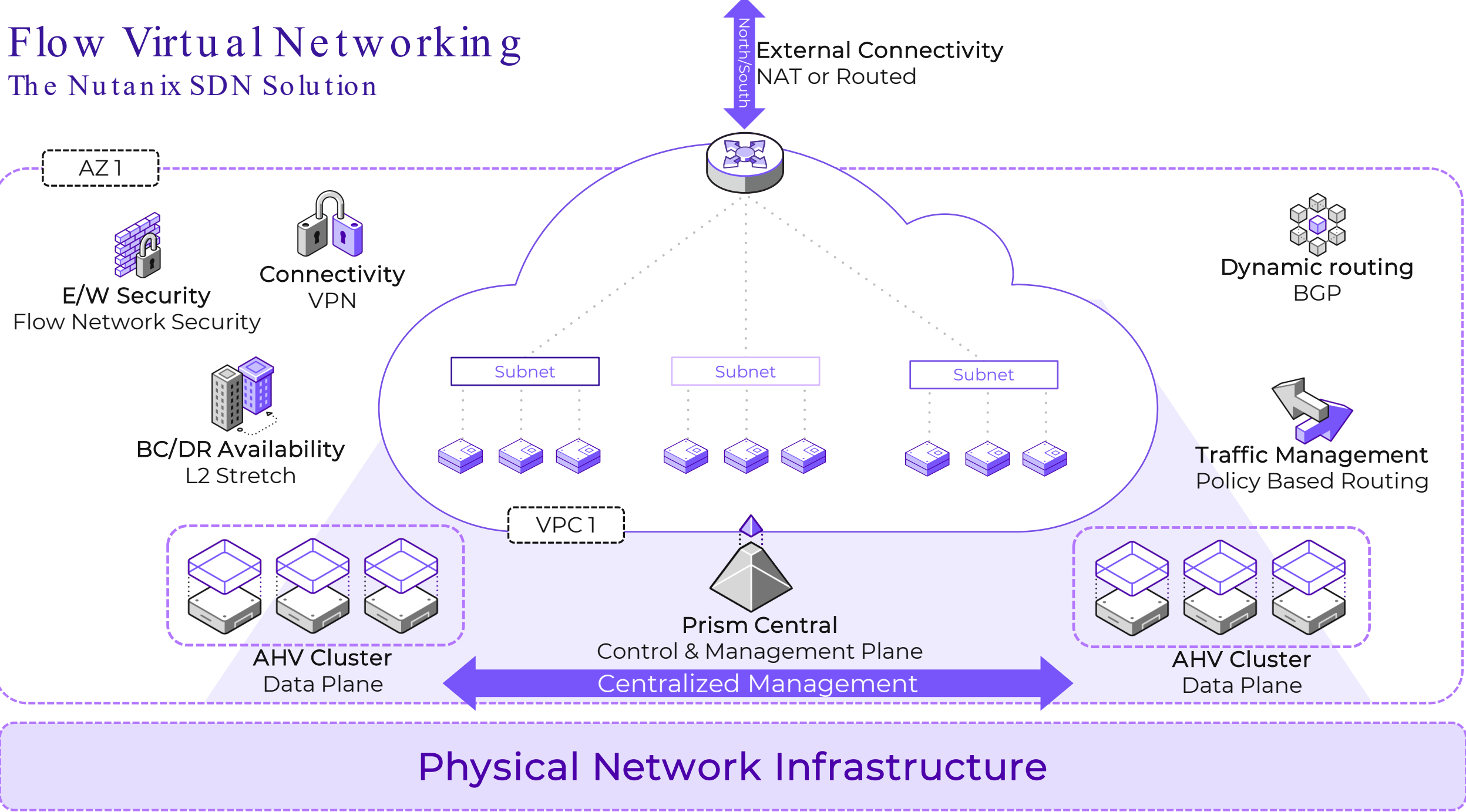
1-Click mobility across  
locations

Homogenous Secure  
Substrate

Instant | Flexible | Secure

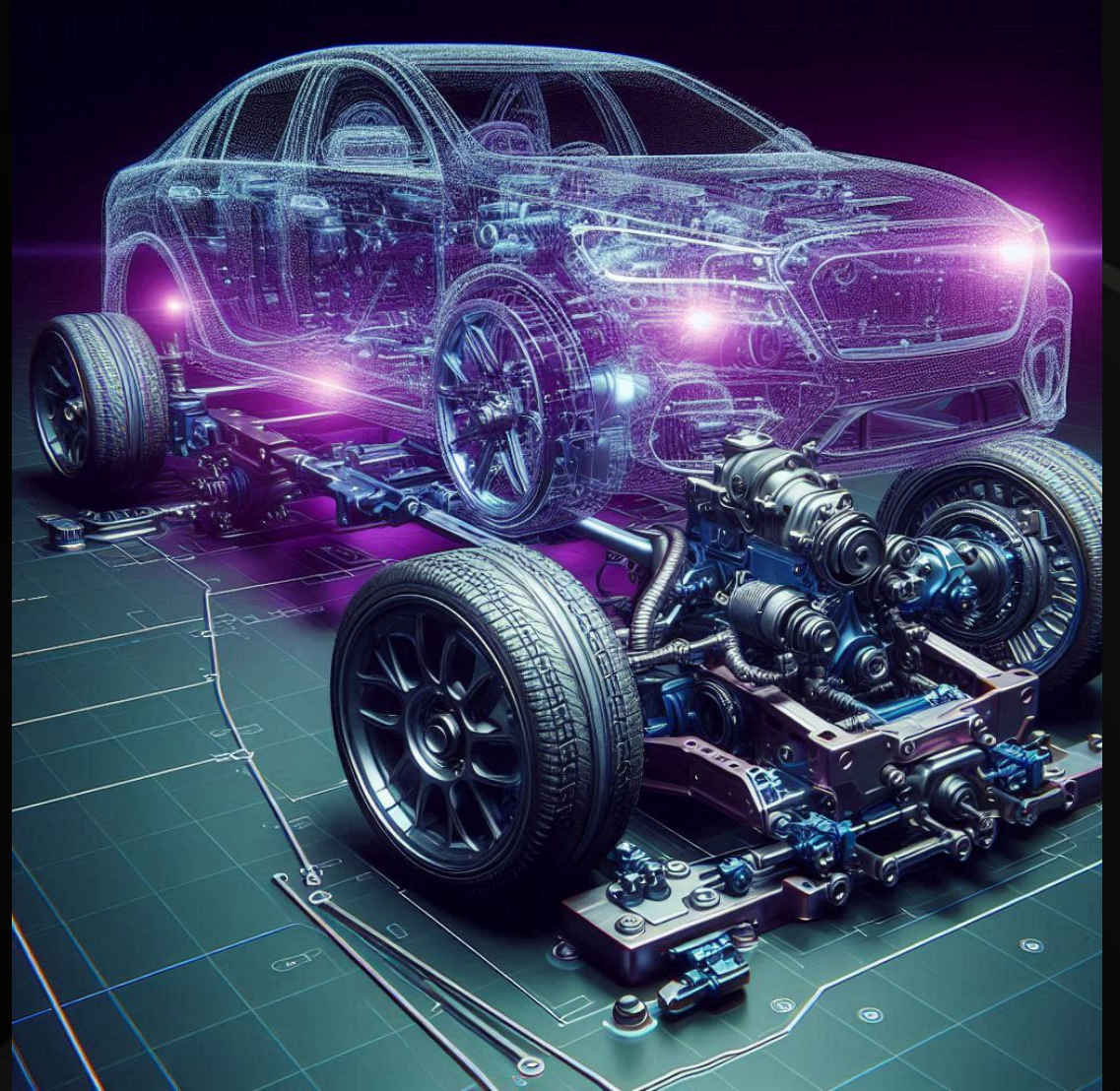
# Flow Virtual Networking

The Nutanix SDN Solution



# Integration

- The chassis integrates all the car's systems, engine, transmission, suspension, etc. into a cohesive unit.
- The Nutanix hybrid cloud platform integrates services, such as compute, storage, and networking, into a unified platform



# Partnerships: Security-Driven

## Firewalls

Barracuda  
Check Point  
SOFTWARE TECHNOLOGIES LTD  
CISCO  
FORTINET.  
JUNIPER.  
NETWORKS  
paloalto  
NETWORKS  
radware  
SONICWALL  
SOPHOS

## Endpoint Protection

Bitdefender<sup>®</sup>  
CROWDSTRIKE  
McAfee<sup>®</sup>  
paloalto  
NETWORKS | CORTEX  
BY PALO ALTO NETWORKS  
SOPHOS  
TREND  
MICRO  
Symantec.\*

## NDR

corelight  
DARKTRACE  
ExtraHop  
IronNet  
TREND  
MICRO  
VECTRA<sup>®</sup>

## NAC

CISCO  
FORTINET.  
Vulnerability  
Assessment  
Qualys.  
tenable\*  
Cloud Security  
CISCO  
zscaler<sup>™</sup>

## SIEM

splunk  
IBM \*  
Radar  
SOAR  
paloalto  
NETWORKS | CORTEX  
BY PALO ALTO NETWORKS  
Files Security  
Bitdefender GLASSWALL  
McAfee netwrix  
NUCLEUS CYBER  
OPSWAT.  
Symantec.  
TREND  
MICRO  
VARONIS  
RACKTOP

## PAM/IAM

CYBERARK<sup>®</sup>  
Arcon \*  
WALLIX \*  
CYBERSECURITY SIMPLIFIED  
RSA \*  
Key  
Management  
ENTRUST  
FORNETIX<sup>®</sup>  
IBM  
StorMagic  
THALES

What's Next?

An abstract graphic on the right side of the slide. It features a large, dark blue, multi-pointed starburst shape. Overlapping this and extending to the right are several yellow, parallelogram-like shapes, some of which are partially cut off by the edge of the frame. The background is solid black.





- HP Are like the Body Shell
- Hatchback (Can work in most environments) = Laptop
- Rugged and reliable SUV = Thin Client
- Sleek Coupe = AIO device







Rob Goosen

EMEA Business Development Manager & EMEA  
Product Marketing Manager for HP Cloud Clients



# HP Elite mt645 G8 Mobile Thin Client

---

HP's ultimate mobile solution  
for virtualization



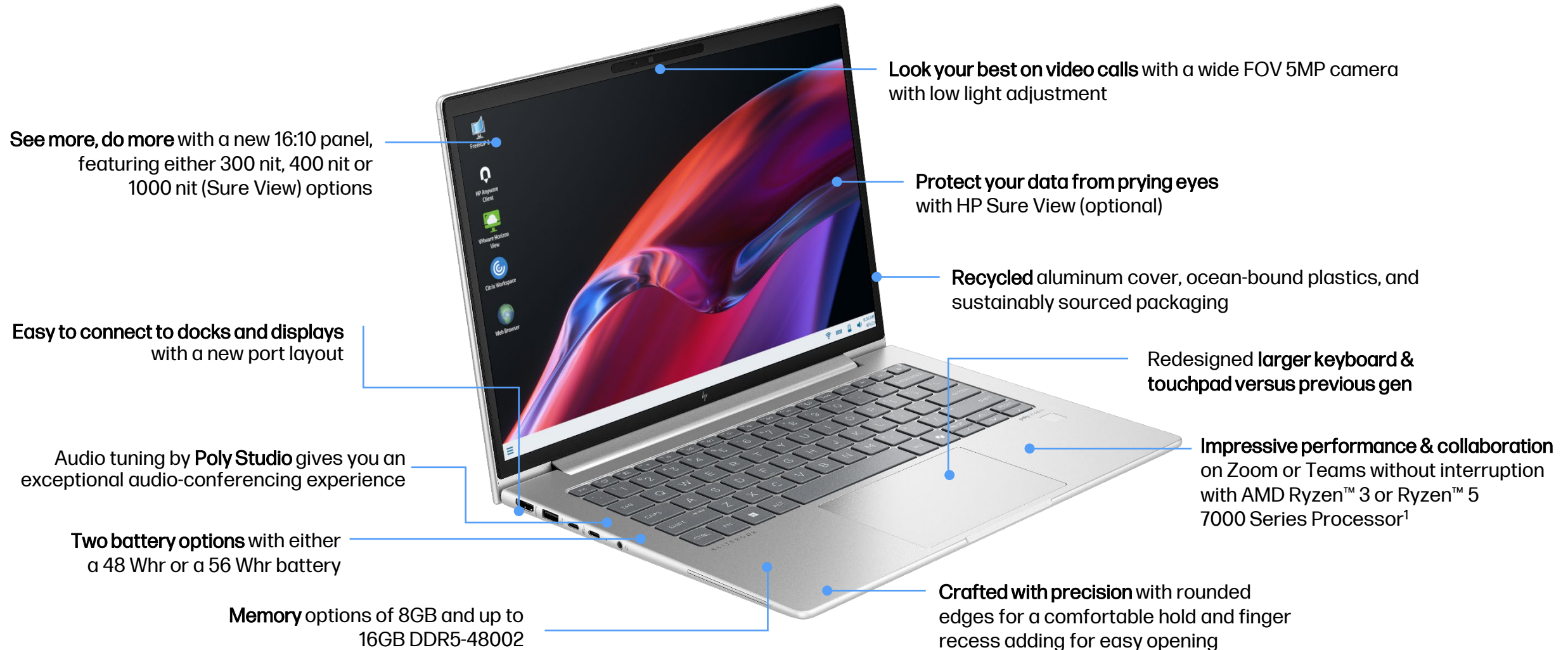
# Product walkaround



**Weight**  
3.08 lbs  
1.398 kg



**Dimensions**  
318.6 x 224.4 x 19.9 mm  
12.54 x 8.83 x 0.78 in



See more, do more with a new 16:10 panel, featuring either 300 nit, 400 nit or 1000 nit (Sure View) options

Look your best on video calls with a wide FOV 5MP camera with low light adjustment

Protect your data from prying eyes with HP Sure View (optional)

Recycled aluminum cover, ocean-bound plastics, and sustainably sourced packaging

Easy to connect to docks and displays with a new port layout

Redesigned larger keyboard & touchpad versus previous gen

Audio tuning by **Poly Studio** gives you an exceptional audio-conferencing experience

Impressive performance & collaboration on Zoom or Teams without interruption with AMD Ryzen™ 3 or Ryzen™ 5 7000 Series Processor<sup>1</sup>

Two battery options with either a 48 Whr or a 56 Whr battery

Memory options of 8GB and up to 16GB DDR5-48002

Crafted with precision with rounded edges for a comfortable hold and finger recess adding for easy opening



# Clean and simple port configuration



# Protected by HP Wolf Security



HP WOLF SECURITY

Equipping you with resiliency and protection

Above the OS	HP Sure View HP Sure Shutter Smart Card Reader Finger Print Sensor
In the OS	IGEL OS Linux
Below the OS	HP BIOSphere Gen HP Sure Start Gen7 HP Tamper Lock

- Read Only/Secure OS options
- No data stored on device
- Ephemeral Mode



# Preserve your privacy and access to sensitive information

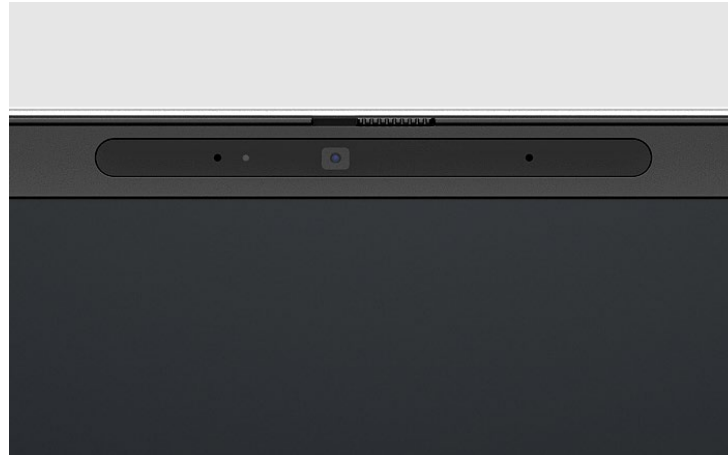


HP WOLF SECURITY



## Protect sensitive information from prying eyes

Block prying eyes' from viewing your screen with optional HP Sure View that **makes your screen unreadable** from the side.



## Control when you can be seen


Get peace of mind with the built-in Sure Shutter that **physically blocks the lens of your camera** with a simple slide.



## Secure, seamless login and collaboration

Log in to your PC securely using the **integrated touch** fingerprint sensor on the keyboard deck. Enable **seamless and secure communication** between smart cards and devices with an HP Smart Card Reader.





# Durable construction

Built to last

Undergoes

19

MIL-STD 810H tests

120k

Hours

HP Total Test Process

The real challenge of building thin, light, and powerful is to remember where this device will be used: in a mobile environment.



# HP Elite t755 Thin Client

---

Optimal thin client performance,  
reliability, and security.





# Product walkaround



**Weight**  
1.3 kg; 2.87 lbs



**Dimensions**  
50 x 210 x 210 mm  
1.97 x 8.27 x 8.27 in

## Powerful processing

AMD Ryzen V2546

## Internal storage

Non-volatile flash storage up to 512 GB capacity

## System memory

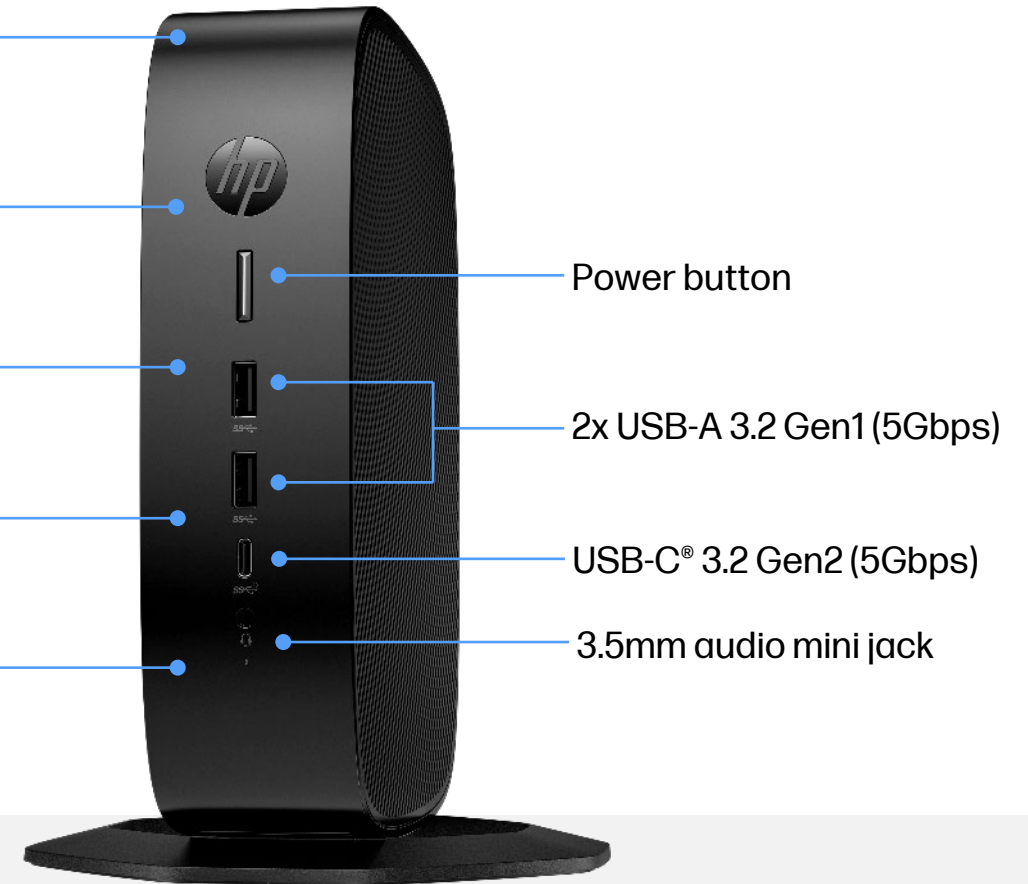
Options up to 32GB DDR4 3200

## Stay connected

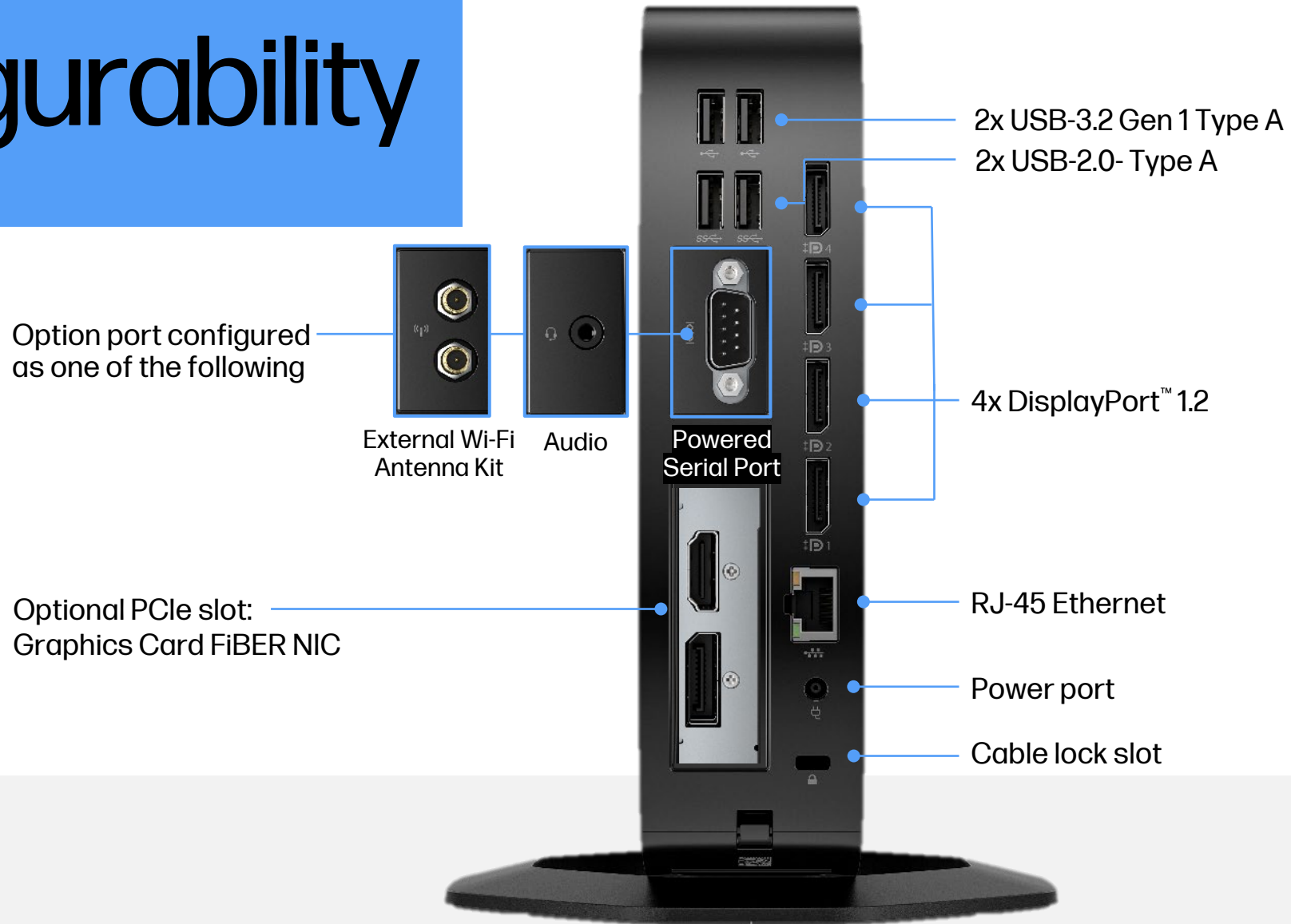
With Wi-Fi 6E + Bluetooth® 5.3 WLAN wireless card , RJ-45

## Experience more screen real estate

With support for up to six 4K displays (with optional graphics card)



# Rear port configurability



# Maximum Security, From Silicon to Cloud



## Inherent Endpoint Security.

Help protect sensitive data with ephemeral mode that reformats the HP thin client to its mandated default state.

Securely wipe out user data, app installation, web cookies, and history on thin clients after each user log-in session.



## Lockdown the Endpoint OS.

Gain peace of mind with IGEL's Linux OS lockdown features that help prevent unauthorized changes to mission-critical endpoints.



## Uncover physical tampering

Protect your HP thin client and organization's data with physical intrusion detection technology. Detecting unauthorized attempts to physically access devices, access can be easily secured to protect sensitive information.



Now What?



# Broker



Workspot.

citrix™



Parallels



• It's the Satnav

• You decide how you want to deploy your apps based on your requirements, and the Broker you choose gets you there.





Workspot.

Parallels



- Go via a drive through for a coffee –  
VDI published Apps
- Service station stop for Lunch –  
VDI Desktop.



# Browsers/SAAS



- Taking a direct route to your app.
- Forester has stated that “In 2024, we’ll see SAAS sales hit 75% of new enterprise software purchases”

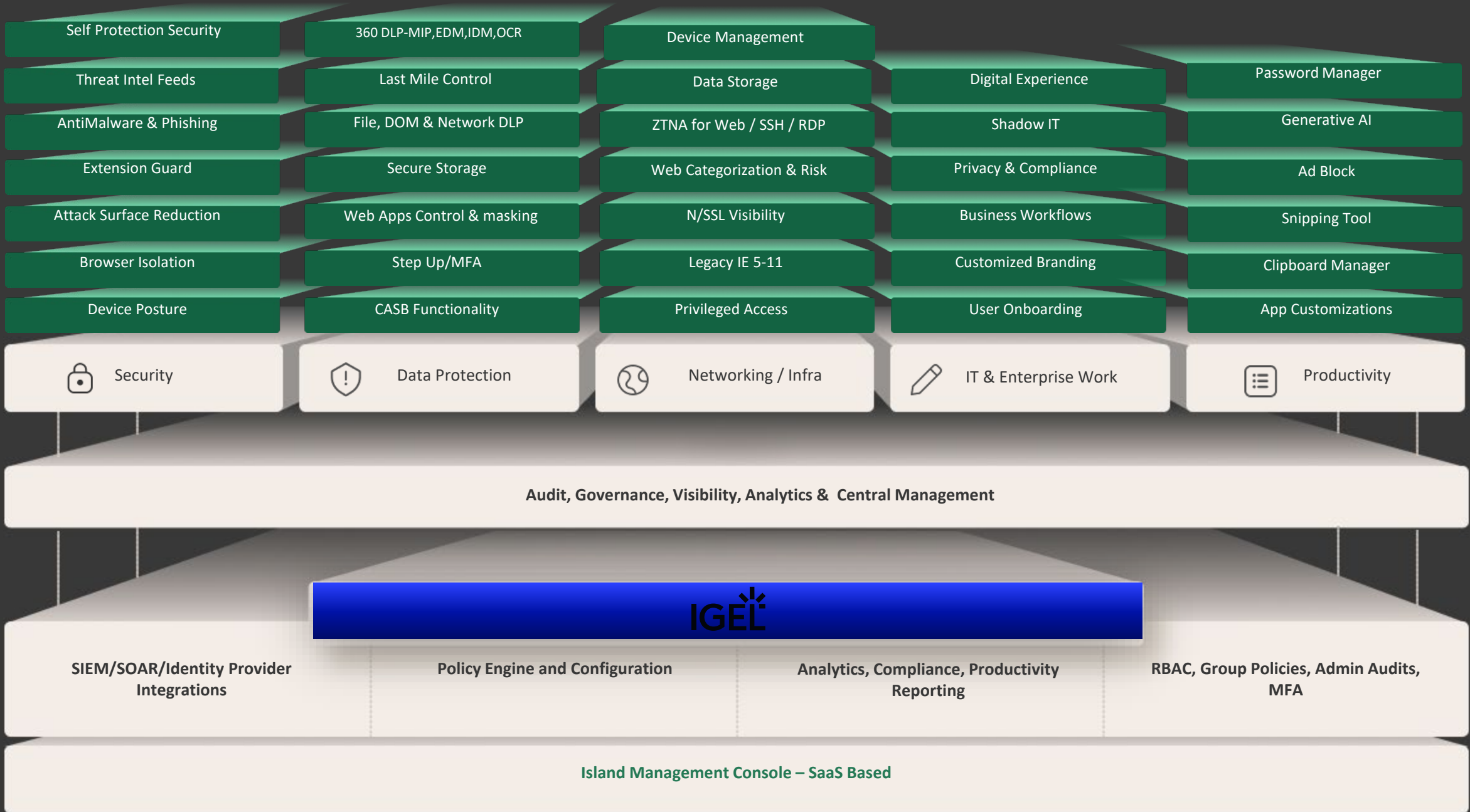




- For the use case of SAAS apps, but where you want a more secure browser.
- Direct route but with a security detail to make sure nothing goes wrong.
- Island Browser and Citrix Enterprise Browser have solutions for this.







# Citrix Enterprise Browser

Chromium-based,  
enterprise-controlled  
**browser for work**



**Zero Trust Access (ZTNA)**



**Data Leakage Prevention**



**Web Threat Security**



**Visibility & Governance**

The next piece of the puzzle?



# control UP

- They are the Sensors
- Service light on? = Needing Laptop battery replacement
- Lower MPG? = inflate tyres
- Slow Performance? = Pinpoint network issue, instruct user to reboot Home WiFi



# control <sup>UP</sup> .|||

Simon Townsend

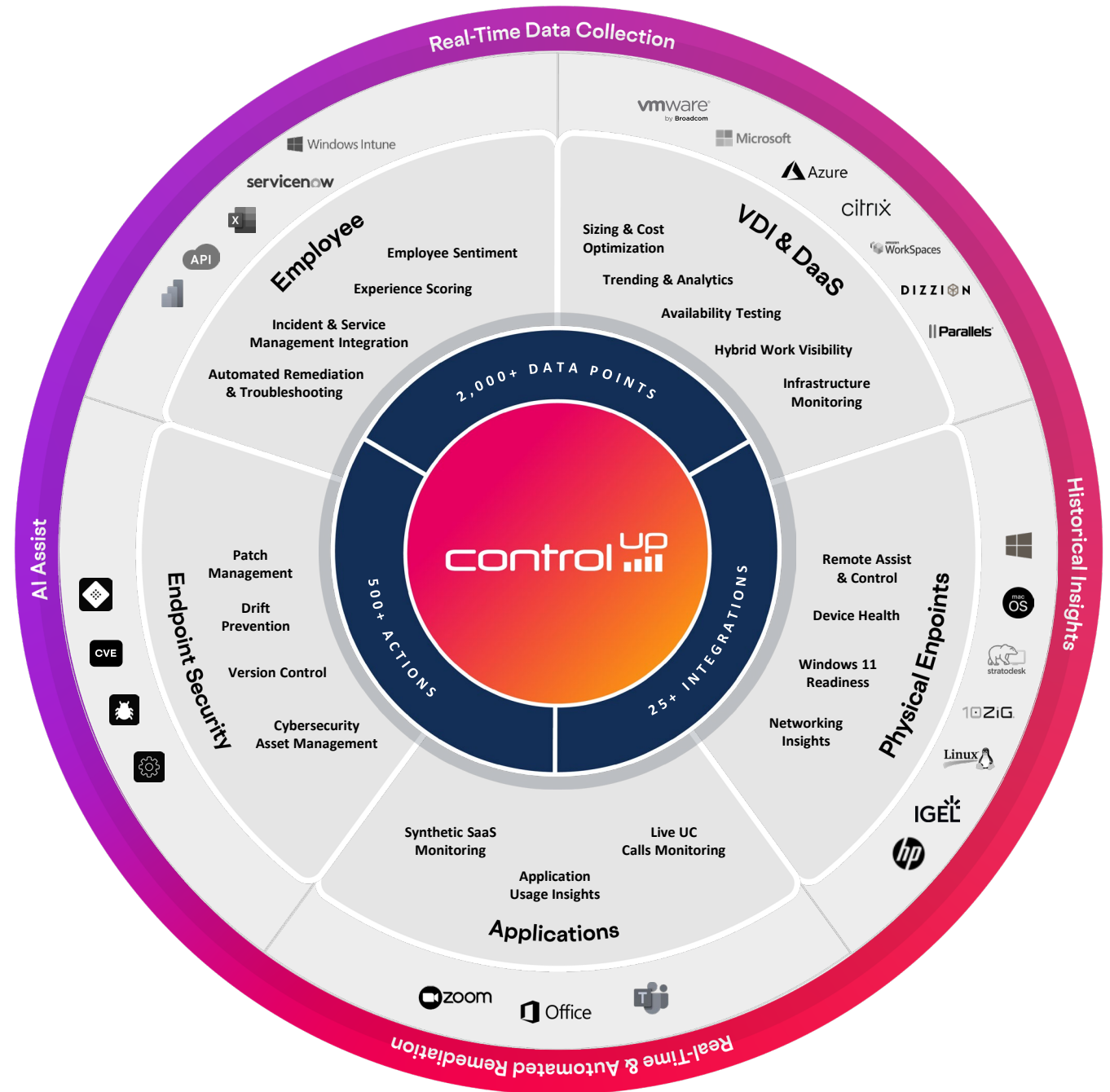
Field CTO



Introducing

# ControlUp DEX Platform

- True real-time visibility
- Automated remediation
- Any desktop, any application, anywhere



Teams

This Year (2024)

Add Filters +

Call ID	Type	Caller/Org	Participants	Score	Start Time	End Time	Duration (mm:ss)	Audio	Video	Screen Share	Mode
b7114e8d8f68	Peer to peer	Randy Watson	2	9.2	06/03/2024 at 4:01 PM	06/03/2024 at 4:06 PM	5:18	🔊	📺	🖥️	📱
7f21f1181b94	Peer to peer	William Nelson	2	9.1	05/20/2024 at 4:15 PM	05/20/2024 at 4:59 PM	43:57	🔊	📺	🖥️	📱
39c404bfb0d6	Peer to peer	Randy Watson	2	9.4	05/09/2024 at 4:14 PM	05/10/2024 at 2:28 PM	1333:20	🔊	📺	🖥️	📱
d1d9841f2406	Peer to peer	Crystal Clear	2	9.4	05/09/2024 at 4:39 PM	05/09/2024 at 4:39 PM	0:00	🔊	📺	🖥️	📱
efaddf35414e	Peer to peer	Crystal Clear	2	9.3	05/09/2024 at 4:38 PM	05/09/2024 at 4:38 PM	0:24	🔊	📺	🖥️	📱
b547ed4844cc	Peer to peer	Crystal Clear	2	9.2	05/09/2024 at 4:36 PM	05/09/2024 at 4:36 PM	0:08	🔊	📺	🖥️	📱
036c6e1733f6	Peer to peer	Muddy Waters	2	9.1	05/09/2024 at 4:35 PM	05/09/2024 at 4:36 PM	0:33	🔊	📺	🖥️	📱
71ae835a438a	Peer to peer	Crystal Clear	2	9.1	05/09/2024 at 4:34 PM	05/09/2024 at 4:34 PM	0:03	🔊	📺	🖥️	📱

Page 1 of 1 25 Records Show 100 records per page 25 Displayed

All Employees



**Good Experience**  
4 employees

**Fair Experience**  
0 employees

**Poor Experience**  
0 employees

Apps

11  
+2 new

Devices

4 Active  
+1 new

Unified Comm.

-

User Sentiment

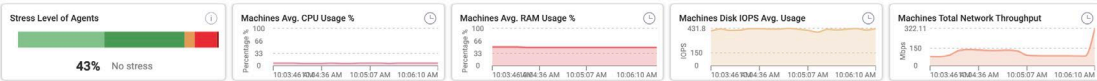
-

9.4 Overall Experience Score

Useful Links [Top Used Apps Azure](#) [Top Installed Apps](#) [Top Operating Systems](#) [Missing Patches](#)

Score Over Time

Good Fair Poor



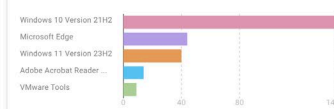
Name	Stress Level	Status	CPU	Memory Utiliza...	Disk Transfers...	Disk Queue	Net Total	Uptime
CLOUDPC001	Critical	Ready	72%	53%	Error	Error	0.23 Mbps	11:13 h
ARDS21	High	Ready	1%	63%	0	0	0.01 Mbps	3 mont
ARDS23	High	Ready	1%	62%	0	0	0.01 Mbps	3 mont
ARDS22	High	Ready	2%	58%	0	0	0.01 Mbps	3 mont
ARDS20	High	Ready	4%	59%	1	0	0.02 Mbps	9 days

Categories



17 Outdated Version  
14 Security  
3 OS

CVEs



Severity



9 CRITICAL  
5 HIGH  
2 MEDIUM  
18 LOW

Apps

APP NAME	CATEGORY	PLATFORM	VERSIONS	VENDOR	SCORE	SEVER...	CVEs	REMEDIATION ...	USAGE	INSTAL
Microsoft Edge	Security	Windows	1	Microsoft Corpora	2.8	CRITICAL	44	Available	92%	26
Windows 10 Version 21	OS	Windows	1	Microsoft Corpora	4.5	CRITICAL	146	Available	-	2
Adobe Acrobat Reader	Security	Windows	1	Adobe Systems In	6.3	HIGH	14	Available	-	-
Windows 10 Version 22	OS	Windows	1	Microsoft Corpora	6.5	LOW	-	Available	-	10
Windows 11 Version 23	OS	Windows	1	Microsoft Corpora	6.6	CRITICAL	40	Available	-	14
Google Chrome	Security	Windows	1	Google Inc.	6.7	CRITICAL	1	In Progress	33%	15

Linking it all together?

An abstract graphic on the right side of the slide. It features a large, dark blue, multi-pointed starburst shape. Overlapping this and extending to the right are several yellow and gold-colored rectangular shapes, some of which are tilted. The background is black.



# IGEL

- The software that everything runs on.
- Truly centralised management is key.

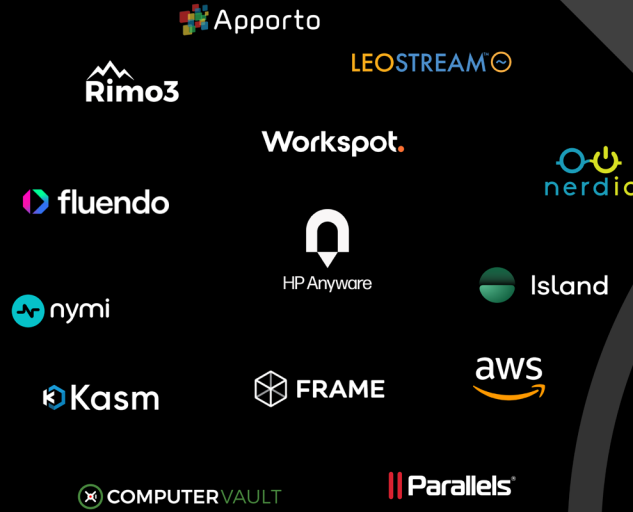


VDI/DaaS/Browser

Unified Endpoint Management

IAM Security

SaaS/Horizontal/Vertical Apps



The Future of  
**IGEL** | Ready



SASE/SSE

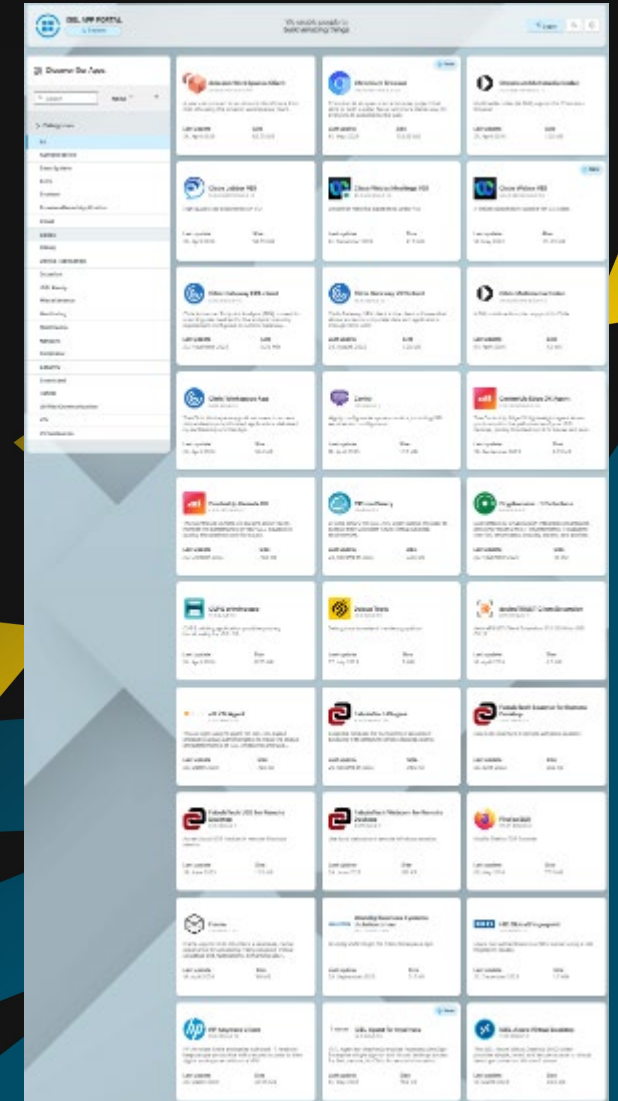
Unified Collaboration

DEX/SIEM/Visibility/Observability

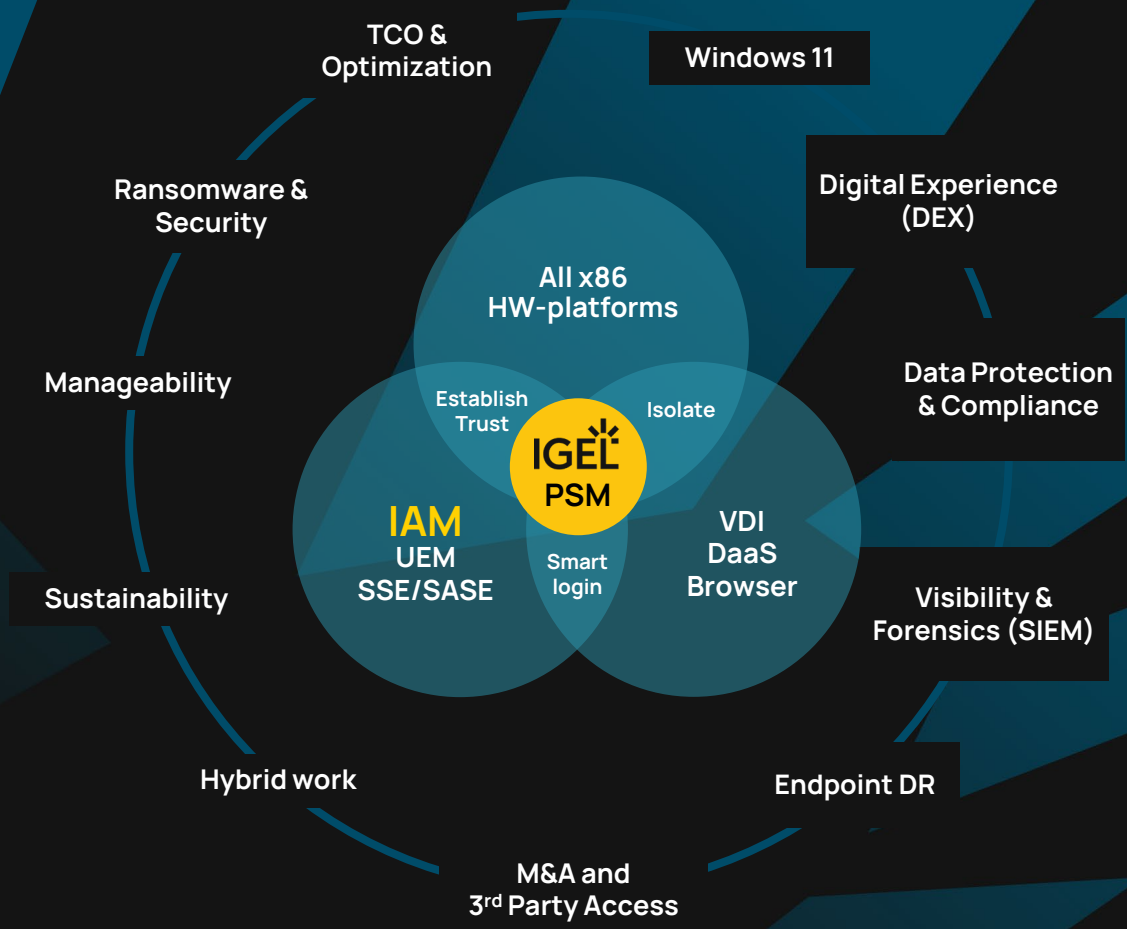
Endpoints/DC/Peripherals

# Broad IGEL Ecosystem

- > 50 IGEL native partner apps
- Cloud
- Security
- Smartcard
- Dictation
- Monitoring / DEX
- Unified Communication
- VDI



# IGEL Preventative Security Model™ (PSM)



## Local Apps on OS12

- Run in the secure and trusted context of OS12
- Enable a great user experience
- Managed and deployed easily

zoom

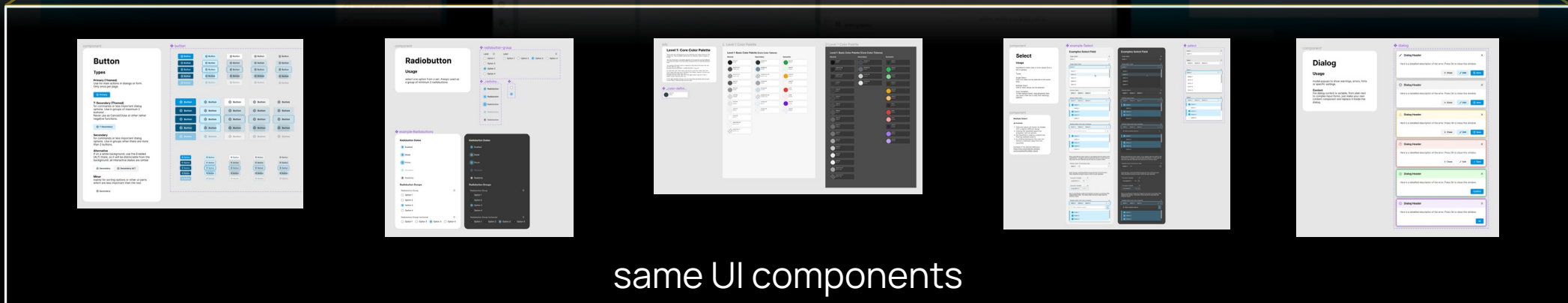
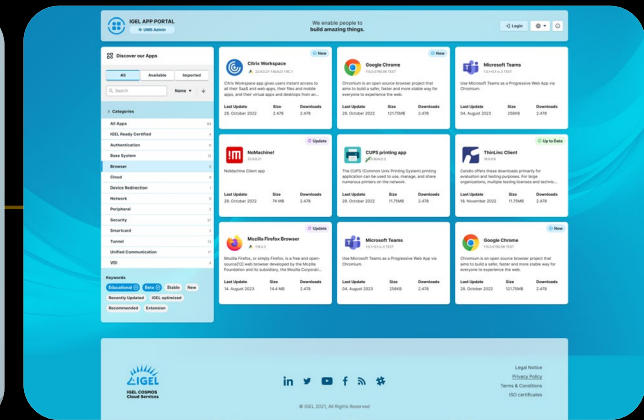
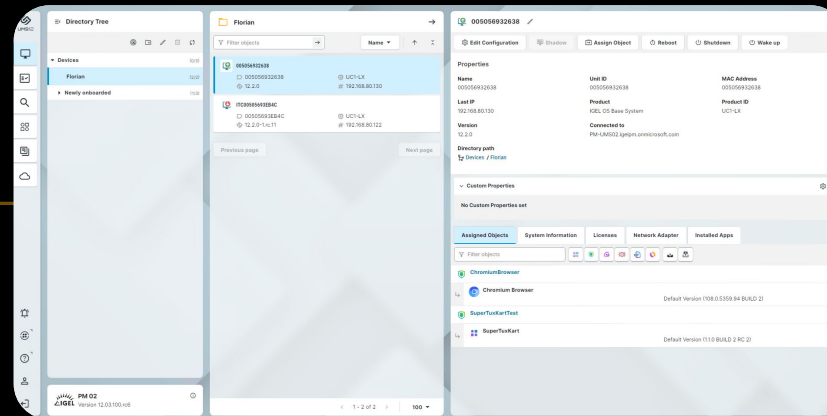


# Unified Design System

- One product family one design
- Consolidated Design Language
- One design library



# One library for all products



same UI components

Deliver a truly Modern Workspace

With a

cloud first app strategy for the future



# Open Questions



Thank You

