

HP Elite mt645 G8 Mobile Thin Client with IGEL OS



Our ultimate mobile solution for virtualization

Provide your teams with the cutting-edge HP Elite mt645 G8 with IGEL OS for optimized collaboration, multitasking, and security in cloud environments.

Solution Brief



Collaborate seamlessly

Enable effective collaboration for a robust and productive meeting Experience^{1,2} with support for Zoom, Microsoft Teams, and more, dual speakers with Audio by Poly Studio, and a 5MP³ or HD camera with temporal noise reduction.

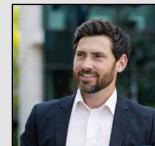


Connected almost anywhere

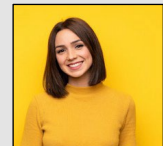
Wired or wireless, this HP Elite mt645 G8 offers varied connection options to suit your workstyle and workspace. Stay wired with an RJ-45 port and choose from optional 4G LTE⁴ and Wi-Fi 6E⁵ options with Bluetooth[®] 5.3 wireless card.



Designed for



Road
Warriors



Remote
Collaborators



Office
Collaborators

Unleash productivity for hybrid workers

Amplify productivity with a powerful and reliable AMD Ryzen™ 7000 series processor⁶ and up to 16GB DDR5 memory. Get up and running quickly with IGEL OS onboarding service for secure access and enjoy HP and IGEL's future-ready combination.

Prevent ransomware, protect data

IGEL OS offers a Preventative Security Model™ built around a modular design, secure boot process, and integration with leading authentication vendors to support single sign on. A read-only OS on the device helps protect company data while working from almost anywhere.

Help protect our shared future

The ENERGY STAR® certified HP Elite mt645 G8 Mobile Thin Client contains at least 50% post-consumer recycled plastic in the keycaps⁷, and the outer box packaging is 100% sustainably sourced and recyclable.^{8,9} IGEL OS is lean, installs required apps only and eliminates add-on security and management agents to reduce energy use.

Designed for comfort

Redesigned for smooth functionality, this compact and lightweight HP Elite mt645 G8 features an enlarged keyboard and touchpad. Styled with newly rounded edges and finger recess on the lid makes it easy to handle and open for added ease-of-use.

Our ultimate solution for virtualization

Designed for performance and reliability with advanced security and productivity features, the HP Elite mt645 G8 Thin Client equipped with IGEL OS empowers your teams to be at their best for the ultimate experience in virtualized computing.

HP Elite mt645 G8 Mobile Thin Client

OS	IGEL OS ¹⁰
Processor/Chipset	AMD Ryzen™ 7335U/R5 7535U ⁶
Graphics	Integrated AMD® UMA Graphics; No discrete option
Form Factor	Clamshell. Aluminum lid/ keyboard deck and bottom cover. Screen to Body Ratio 88%. 177+/-3° open angle
Dimensions	12.54 x 8.83 x .78 in; 318.6 x 224.35 x 19.9 mm (Dimensions may vary by configuration)
Weight	Starting from 1.398 kg (3.08 lbs) (Weight may vary by configuration)
Display	14" diagonal 16:10 WUXGA (1920 x 1200), Anti-Glare, UWVA, 300 nits 14" diagonal 16:10 WUXGA (1920 x 1200) Anti-Glare UWVA WLED+Low Blue Light sRGB NB2X 400 nits 14" diagonal 16:10 WUXGA (1920 x 1200) Anti-Glare UWVA WLED+Low Blue Light sRGB NB2Y 1000 nits
Memory	Up to 16GB DDR5-4800 SDRAM ³
Storage Options	256GB PCIe NVMe Value SSD ¹¹
Ports	2x USB-A 3.2 Gen1 (1x charging port, 1/side), 2x USB-C ⁴ , 1x RJ-45, 1x HDMI 2.1 ² , 1x Combo Audio, Smart Card/NFC option, 1x nano SIM slot External ^{13,14}
Camera & Audio	FHD Camera, ³ 5 MP camera ³ + IR Camera ³ Audio by Poly Studio, dual stereo speakers, dual microphones
Communications	Realtek 8852CE Wi-Fi 6E ⁵ + Bluetooth® 5.3 wireless card WW WLAN Mediatek RZ616 Wi-Fi 6E ⁵ + Bluetooth® 5.3 wireless card M.2 2230 WLAN Optional HP 4000 4G LTE-Advanced Pro WWAN ⁴
Battery & Adapters	Choose either 48Whr or 56Whr battery ¹⁵ 45W/65W USB-C Adapter (65W Required for HP Fast Charge) ¹⁶ 65W AC Adapter (required for HP Fast Charge) ¹⁶ No AC Adapter option
Security/ Manageability	Optional Sure View ¹⁷ , IGEL Universal Management Suite, IGEL Preventative Security Model™
Sustainability	50% recycled aluminum (may vary by configuration), ¹⁸ Keycaps made with 50% post-consumer recycled plastic ⁷ , Speaker box with ocean-bound plastic ¹⁴ ; 100% sustainably sourced packaging. ^{8, 9} Bulk packaging available; Low Halogen; EPEAT Climate+™ Gold Registered in US ¹⁹ , ENERGY STAR® certified; TCO Certified
Durability	Pass 19 MIL-STD 810 H ²⁰ test including drop, Spill-resistant ²¹ , Wipeable ²²

HP Elite mt645 G8 Mobile Thin Client

Footnotes

1. Internet access required and not included.
2. Microphone, camera, speakers, Zoom, and Microsoft Teams license required and sold separately.
3. Optional feature that must be configured at the time of purchase.
4. 4G LTE module is optional, must be configured at the factory, requires activation and separately purchased service contract. Check with service provider for coverage and availability in your area. Connection, upload, and availability in our area. Connection, upload, and download speeds will vary due to network, location, environment, network conditions, and other factors. 4G LTE is not available on all products, in all regions.
5. Wi-Fi 6E requires a Wi-Fi 6E router, sold separately, to function in the 6GHz band. Availability of public wireless access points limited. Wi-Fi 6E is backwards compatible with prior 802.11 specs and available in countries where Wi-Fi 6E is supported.
6. Multicore is designed to improve performance of certain software products. Not all customers or software applications will necessarily benefit from use of this technology. Performance and clock frequency will vary depending on application workload and your hardware and software configurations. AMD's numbering is not a measurement of clock speed.
7. Recycled plastic content percentage is based on the definition set in the IEEE 1680.1-2018 standard.
8. 100 percent outer box packaging made from sustainably sourced certified and recycled fibers. Fiber cushions made from 100 percent recycled wood fiber and organic material. Any plastic cushions are made from >90% recycled plastic.
9. 100 percent of all paper-based packaging for PCs and displays have been derived from recycled and/or certified sustainable sources.
10. On specific configurations, IGEL OS will be made available to end users pursuant to a thirty (30) day trial at no cost to the end users, with an option for end-users to extend the trial by registering with IGEL for a total trial period of 90 days. Following any trial period, end users must contact IGEL to purchase a license to the IGEL OS to continue use of the IGEL OS with the HP Elite mt645 G8.
11. For storage drives, GB = 1 billion bytes. Actual formatted capacity is less.
12. HDMI 2.1 Support resolution up to 4K @60 Hz
13. Lock must be purchased separately.
14. Speaker enclosure component contains 5 percent ocean-bound plastic by weight.
15. Actual battery Watt-hours (Wh) will vary from design capacity. Battery capacity will naturally decrease with shelf life, time, usage, environment, temperature, system configuration, loaded apps, features, power management settings and other factors.
16. Recharges up to 50% within 30 minutes when the system is off or in standby mode when used with the power adapter provided with the notebook. Power adapter minimum of 65 watts required for battery capacities 56Whr or less. Power adapter minimum of 100 watts required for battery capacities greater than 56Whr and less than 83Whr. Power adapter minimum of 120 watts required for battery capacities greater than 83Whr and less than 100Whr. After charging has reached 90% capacity, charging speed will return to normal. Charging time may vary +/- 10% due to System tolerance.
17. HP Sure View is an optional feature that must be configured at purchase and is designed to function in landscape orientation.
18. Percent of recycled material varies by product.
19. Based on US EPEAT® registration according to IEEE 1680.1-2018 EPEAT®. EPEAT® status varies by country. Visit <http://www.epeat.net> for more information.
20. MIL STD 810 testing is not intended to demonstrate fitness for U.S. Department of Defense contract requirements or for military use. Test results are not a guarantee of future performance under these test conditions. Accidental damage requires an optional HP Accidental Damage Protection Care Pack.
21. Any accidental damage requires an optional HP Accidental Damage Protection Care Pack.
22. See wipe manufacturer's instructions for disinfecting and the HP cleaning guide for HP tested wipe solutions at How to Sanitize Your HP Device Whitepaper (<http://h20195.www2.hp.com/v2/GetDocument.aspx?docname=4AA7-7610ENW>).



© Copyright 2024 HP Development Company, LP. The information contained herein is subject to change without notice. The only warranties for HP products and services are set forth in the express warranty statements accompanying such products and services. Nothing herein should be construed as constituting an additional warranty. HP shall not be liable for technical or editorial errors or omissions contained herein.

Advanced Micro Devices, AMD, the AMD and AMD Arrow logo, EPYC™, the EPYC logo, AMD Instinct, Infinity Fabric™, AMD Radeon™, ROCm™, the ROCm Logo and combinations thereof are trademarks of Advanced Micro Devices, Inc. USB Type-C® and USB-C® are registered trademarks of USB Implementers Forum. DisplayPort™ and the DisplayPort™ logo are trademarks owned by the Video Electronics Standards Association (VESA®) in the United States and other countries. Members of Wi-Fi Alliance® are bound to follow the requirements of the Brand Style guide pursuant to the Certification Mark License Agreement. Please contact brandusage@wi-fi.org if you have any questions about Wi-Fi Alliance mark usage requirements. USB4® is a registered trademark of USB Implementers Forum.