



01

# Vehicle Mount Terminals

## MFT12SE

### TECHNICAL DATA

<b>Housing:</b>	Aluminium, powder-coated
<b>Resilience:</b>	Shock and Vibration according to EN60068-2 Part -6, -27
<b>Protection:</b>	IP54 (optional IP65)
<b>Operating temp.:</b>	-30 °C to 45 °C/-22 °F to 113 °F
<b>Storage temp.:</b>	-30 °C to 70 °C/-22 °F to 158 °F
<b>Rel. humidity:</b>	5 % to 95 % (in operation), non-condensing
<b>Dimensions:</b>	308 x 268 x 63 mm (W x H x D; without accessories)
<b>Weight:</b>	Approx. 3.6 kg (without accessories)
<b>Power supply:</b>	9 to 72 V DC (electrically isolated)
<b>Power consumption:</b>	Approx. 19 W (as standard), max. 70 W (freezer use)
<b>Display:</b>	12.1" color TFT display XGA with LED backlight, 1024 x 768 pixels, 500 cd/m², 2 status LEDs

<b>Touchscreen:</b>	Resistive, minimum surface hardness of 3H, with robust, chemically hardened beaming glass
<b>Keyboard:</b>	Virtual on-screen keyboard, 5 freely programmable function keys
<b>Graphics:</b>	Integrated graphics unit, DirectX12 support
<b>Processor:</b>	Intel Atom® QuadCore up to 4x 1.83 GHz (x5-E3940, Apollo Lake)
<b>Memory:</b>	Windows® 10 IoT Enterprise + IGEL OS: 4 GB RAM, 64 GB flash - opt. 8 GB RAM, 128 GB flash Windows® 11 IoT Enterprise: 8 GB RAM, 64 GB flash - opt. 128 GB flash
<b>Operating system:</b>	Windows® 10 IoT Enterprise, Windows® 11 IoT Enterprise, IGEL OS
<b>BIOS:</b>	UEFI BIOS, update-capable, bootable from LAN or USB as standard
<b>Interfaces:</b>	Ethernet 100-BaseT/10-BaseT autoswitch, RS232, 1x USB 3.0, 3x USB 2.0, integrated speaker in speech output quality, audio/microphone input via jack plugs

# TECHNICAL DATA



## Special features:

- Integrated energy buffer for short-term bridging of power breakdowns
- 2 integrated antennae
- Fan-less design
- Device start-up and shutdown via freely definable function keys (ATX function) and via ignition
- Sunlight readable

## Options:

- Windows<sup>®\*\*</sup> 10 IoT Enterprise + IGEL OS:  
WLAN according to IEEE 802.11 a/b/g/n/ac/ax (WiFi6; 2.4 GHz/5 GHz)  
Fast Roaming according to IEEE 802.11 k/v/r  
BT-compatible close-range network 5.3
- Windows<sup>®\*\*</sup> 11 IoT Enterprise:  
WLAN according to IEEE 802.11 a/b/g/n/ac/ax (WiFi6E; 2.4 GHz/5 GHz/6 GHz)  
Fast Roaming according to IEEE 802.11 k/v/r  
BT-compatible close-range network 5.3
- WLAN Security<sup>1</sup>: WPA, IEEE802.11i (Personal and Enterprise), WPA2, WPA2-PSK  
802.1x: PEAP-MSCHAPv2, PEAP-GTC, PEAP-TLS, EAP-TLS, EAP-TTLS, EAP-FAST, LEAP
- SOTI<sup>®</sup> MobiControl
- Integrated battery for up to 1.5 hours of operation

## ACD All-in-One:

- ACD All-in-One Support & Maintenance for operating system and firmware.
- Includes firmware updates, upgrades to higher OS versions, security patches and unlimited phone support

\* Registered trademark - Intel Atom  
 \*\* Registered trademark - Microsoft  
 1 Standard codification validated by ACD.  
 Subject to technical modifications.

# OPTIONS & ACCESSORIES



Power pack MFT1xSE



Voltage Supply Cable (3 wired)



MFT10SE/MFT12SE Mounting kit flat Standard



MFT10SE Mounting kit RAM Mount



MFT12SE/MFT15SE Mounting kit RAM Mount



MFT1xSE Mounting kit RAM Mount with holding clip



MFT10SE/MFT12SE Mounting kit flat Quick Change System



MFT10SE Mounting kit RAM Mount Quick Change System



MFT12SE/MFT15SE Mounting kit RAM Mount Quick Change System



Quick Change System Power Supply Cable (3 wired)



Quick Change System Adapter (3 wired)



MFT1xSE Adapter bracket



MFT1xSE Mounting kit Adapter bracket



MFT1xSE Keyboard Mounting Device – without keyboard



ML Keyboard black



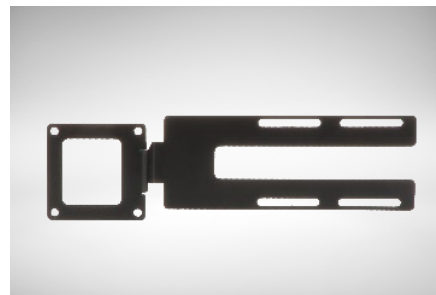
## OPTIONS & ACCESSORIES



MFT1xSE sideward Keyboard with USB-Hub



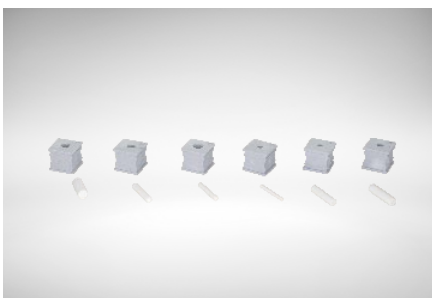
MFT1xSE sideward Keyboard without USB-Hub



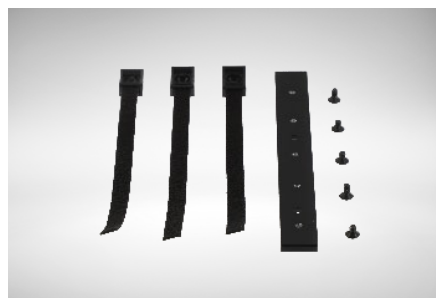
Mounting Kit for MFT1xSE sideward Keyboard



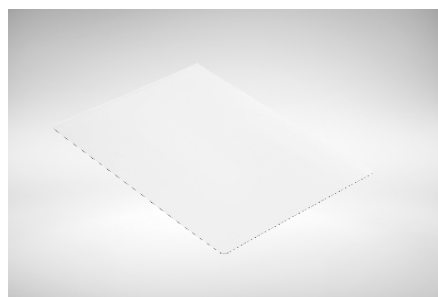
Interface cover IP65



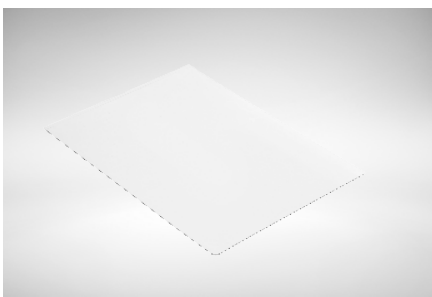
Spout Set for interface cover IP65



MFT1xSE strain relief (for IP65 device variant)



MFT10SE screen protector for resistive touch screen



MFT12SE screen protector for resistive touch screen

**Configure your equipment directly in the online configurator at:**

**<https://www.acd-gruppe.de/en/vehicle-terminal-configurator/>**

**Our sales department will also be happy to help you with the selection under the telephone number +49 7392 708-499**